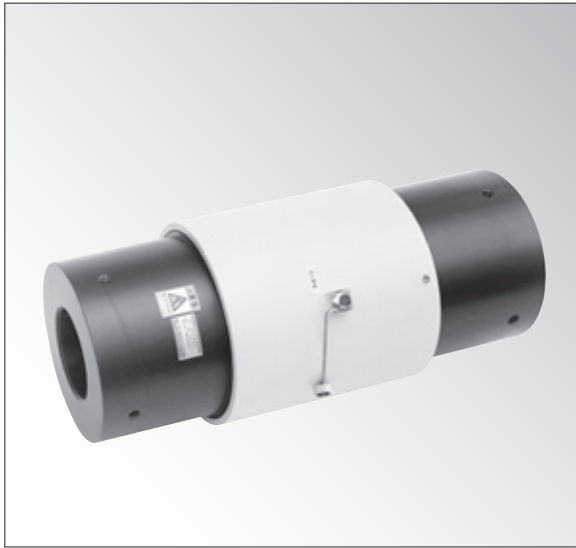


LUR-B-SA1

Jack Load Cell

● 10 kN to 2 MN



Special Design for Jacks Moderate Price Variety of Capacity Range

LUR-B-SA1 series load cells are designed to measure loads applied to jacks when lifting up or moving a large machinery or structure in civil engineering and construction fields. These load cells enable the operators to prevent overloads, unbalanced loads, or movement of the center of gravity.

Specifications

Performance

Rated Capacity	See table below.
Nonlinearity	Within $\pm 0.2\%$ RO for 10 to 200 kN Within $\pm 0.5\%$ RO for 300 kN to 2 MN
Hysteresis	Within $\pm 0.1\%$ RO for 10 to 200 kN Within $\pm 0.5\%$ RO for 300 kN to 2 MN
Rated Output	± 1 mV/V $\pm 1\%$

Environmental Characteristics

Safe Temperature	-10 to 60°C
Compensated Temperature	0 to 60°C
Temperature Effect on Zero	Within $\pm 0.01\%$ RO/°C
Temperature Effect on Output	Within $\pm 0.01\%$ /°C

Electrical Characteristics

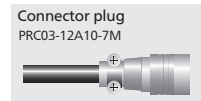
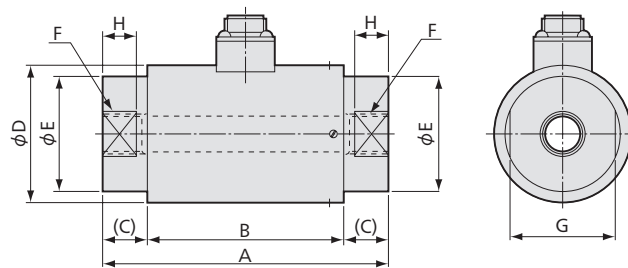
Safe Excitation	15 V AC or DC
Recommended Excitation	1 to 12 V AC or DC
Input Resistance	350 $\Omega \pm 2\%$
Output Resistance	350 $\Omega \pm 2\%$
Cable	4-conductor (0.3 mm ²) chloroprene shielded cable, 7.6 mm diameter by 10 m long, terminated with a connector plug PRC03-12A10-7M

Mechanical Properties

Safe Overloads	200%
Weight	See table below (Excluding cable).

If the capacity is more than 200 kN, the calibration is performed for compressive load only.

Dimensions



Models	Rated Capacity	A	B	(C)	ϕD	ϕE	F	G	H	Weight
LUR-B-10KNSA1	± 10 kN	100	70	15	55	25	M12 P=1.75 d=15	20	10	≈ 1.4 kg
LUR-B-20KNSA1	± 20 kN	110	70	20	60	50	M18 P=1.5 d=20	46	15	≈ 2.1 kg
LUR-B-30KNSA1	± 30 kN	125	85	20	60	50	M24 P=2 d=30	46	15	≈ 2.2 kg
LUR-B-50KNSA1	± 50 kN									
LUR-B-100KNSA1	± 100 kN	175	105	35	65	55	M39 P=2 d=45	50	25	≈ 2.5 kg
LUR-B-200KNSA1	± 200 kN	255	125	65	80	70	M50 P=2 d=65	65	40	≈ 5.2 kg
LUR-B-300KNSA1	± 300 kN	255	125	65	100	90	M65 P=3 d=65	-	-	≈ 8 kg
LUR-B-500KNSA1	± 500 kN	330	170	80	130	120	M85 P=3 d=85	-	-	≈ 15 kg
LUR-B-1MNSA1	± 1 MN	430	210	110	188	158	M110 P=3 d=118	-	-	≈ 55 kg
LUR-B-1.5MNSA1	± 1.5 MN	530	250	140	220	200	M140 P=4 d=140	-	-	≈ 85 kg
LUR-B-2MNSA1	± 2 MN	590	270	160	260	228	M160 P=4 d=170	-	-	≈ 100 kg

● Physical quantity indication ● Static measurement ● Dynamic measurement

LUR-B-SA1
Recommended products for combination

Instrumentation Amplifier
WGA-900A
→ 3-95

Data Logger
UCAM-60B
→ 3-25

Strain Amplifier
DPM-900 Series
→ 3-5

Universal Recorder
EDX-200A
→ 3-55

Universal Recorder
EDX-100A
→ 3-63

Sensor Interface
PCD-400A
→ 3-77