

LMA-A

● $\phi 12$ mm ● Thickness: 4 mm (5N to 50N) ● 5 N to 1 kN

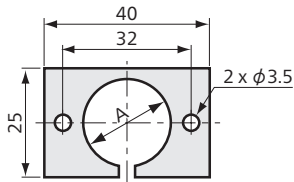
Small-sized Compression Load Cell



Compact & Lightweight Moderate Price Suitable for Load Distribution Measurement

Compact and lightweight LMA-A series load cells are used by just putting or bonding on the measurement point or setting in a hollow.

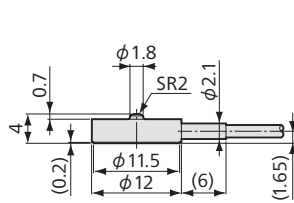
Mount Base CFM-A



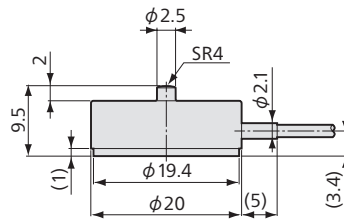
Models	A	Thickness	Remarks
CFM-5A	12.2	1.5	For 5 to 50 N
CFM-100A	20.2	3.0	For 100 N to 1 kN

Material: Aluminum alloy

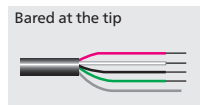
Dimensions



LMA-A-5N to 50N



LMA-A-100N to 1KN



Specifications

Performance

Rated Capacity	See table below.
Nonlinearity	Within $\pm 1\%$ RO
Hysteresis	Within $\pm 1\%$ RO
Repeatability	1% RO or less
Rated Output	0.6 to 2 mV/V for 5 N 0.75 to 2 mV/V for 10 N to 1 kN

Environmental Characteristics

Safe Temperature	-10 to 60°C (Non-condensing)
Compensated Temperature	0 to 50°C (Non-condensing)
Temperature Effect on Zero	Within $\pm 0.3\%$ RO/°C for 5 N Within $\pm 0.2\%$ RO/°C for 10 to 50 N Within $\pm 0.05\%$ RO/°C for 100 N to 1 kN
Temperature Effect on Output	Within $\pm 0.2\%$ /°C for 5 to 50 N Within $\pm 0.05\%$ /°C for 100 N to 1 kN

Electrical Characteristics

Safe Excitation	7 V AC or DC
Recommended Excitation	1 to 5 VAC or DC
Input Resistance	350 $\Omega \pm 2.5\%$
Output Resistance	350 $\Omega \pm 2.5\%$
Cable	4-conductor (0.035 mm ²) vinyl shielded cable, 1.7 mm diameter by 2 m long, bared at the tip (Shield wire is not connected to the case.)

Mechanical Properties

Safe Overloads	150%
Natural Frequencies	See table below.
Weight	5 to 50 N: Approx. 1.5 g, excluding cable 100 N to 1 kN: Approx. 11 g, excluding cable
Material	5 to 50 N: Copper alloy 100 N to 1 kN: Stainless steel
Degree of Protection	IP64 (IEC 60529)
RoHS Directive	EN50581

Optional Accessories

Mount Base CFM-A

Models	Rated Capacity	Natural Frequencies (Approx.)
LMA-A-5N	5 N	15.3 kHz
LMA-A-10N	10 N	17.5 kHz
LMA-A-20N	20 N	24.8 kHz
LMA-A-50N	50 N	32.6 kHz
LMA-A-100N	100 N	21.6 kHz
LMA-A-200N	200 N	29.7 kHz
LMA-A-500N	500 N	43.9 kHz
LMA-A-1KN	1 kN	53.0 kHz

● Physical quantity indication

● Static measurement ● Dynamic measurement

