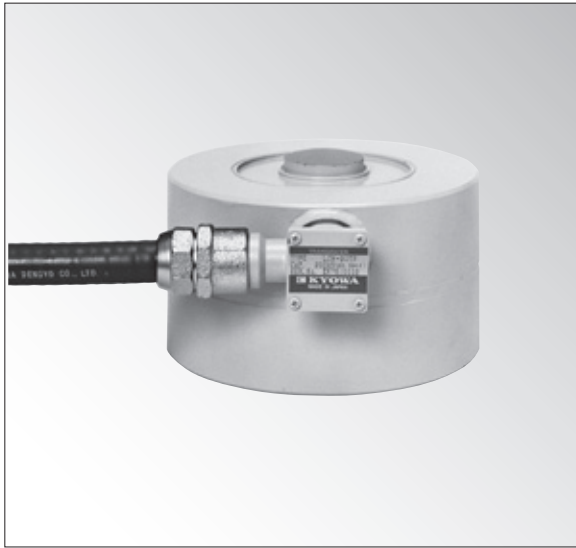


High-accuracy Compression Load Cell



Specifications

Performance

Rated Capacity	See table below.
Nonlinearity	Within $\pm 0.02\%$ RO
Hysteresis	Within $\pm 0.02\%$ RO
Repeatability	0.02% RO or less
Rated Output	2 mV/V $\pm 0.1\%$

Environmental Characteristics

Safe Temperature	-35 to 80°C
Compensated Temperature	-10 to 60°C
Temperature Effect on Zero	Within $\pm 0.0015\%$ RO/°C
Temperature Effect on Output	Within $\pm 0.001\%$ /°C

Electrical Characteristics

Safe Excitation	20 V AC or DC
Recommended Excitation	1 to 10 V AC or DC
Input Resistance	350 $\Omega \pm 0.5\%$
Output Resistance	350 $\Omega \pm 0.5\%$
Cable	6-conductor (0.5 mm ²) chloroprene shielded cable, 9.5 mm diameter by 5 m long with crimp-style terminals for 4 mm (Shield wire is not connected to the case.)

Mechanical Properties

Safe Overloads	200%
Natural Frequencies	See table below.
Weight	See table below.
Degree of Protection	IP67 (IEC 60529)

Optional Accessories (For details, see pages 2-72 to 2-76)

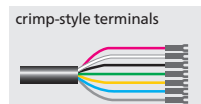
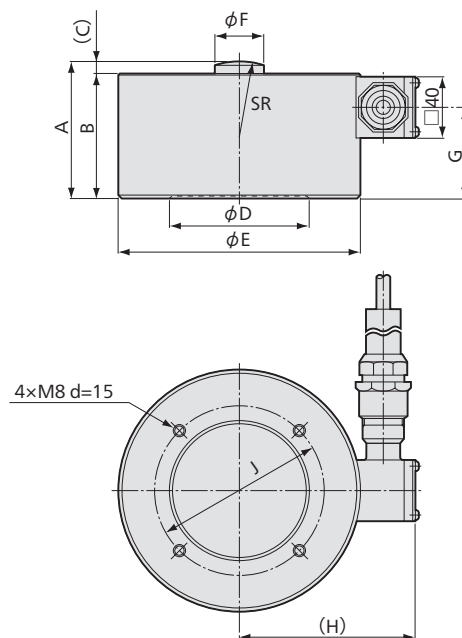
Saddle CA-50B

Able to Measure Compression Loads with Nonlinearity 0.02%.

- Remote sensing possible
- Watertight structure

Useable in high humidity.

Dimensions



Models	Rated Capacity	Natural Frequencies	A	B	(C)	ϕD	ϕE	ϕF	G	(H)	J	SR	Weight*	Movable Saddles
LCH-10TF	100 kN	≈ 7.5 kHz	90	82	8	90	156	32	60	113.5	110	50	≈ 12 kg	CA-50B
LCH-20TF	200 kN	≈ 7 kHz	110	100	10	110	176	45	75	123.5	130	70	≈ 17 kg	CA-50B

*Excluding cable

- Physical quantity indication ● Static measurement ● Dynamic measurement

