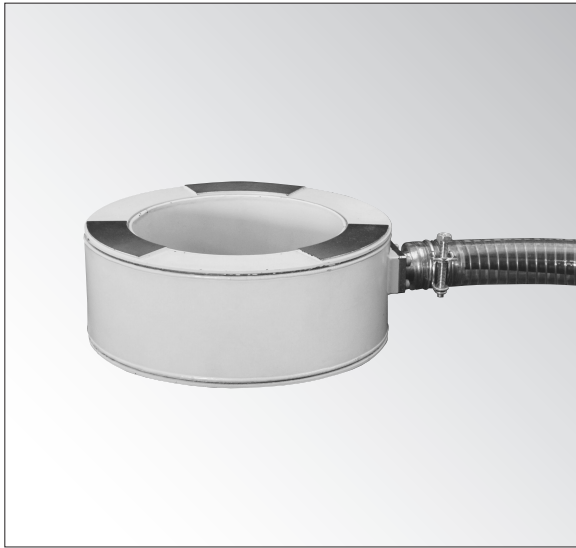


BLW-A

Hollowed Load Cell



To endure field applications, these transducers feature a waterproof design, lightweight, and thin design.

- Eccentric load or inner/outer load causes less sensitivity deviation.
- Large center hollow making it suitable for VSL method
- Waterproof structure, Degree of Protection IP68 (IEC 60529) (0.5 MPa for 24 hours at 23°C ±15°C)
- Thin design
- Lightweight

Designed to measure load of VSL anchors etc.

● Load Measurement ● 500kN to 2MN

Specifications

Performance

Rated Capacity	See table below.
Nonlinearity	Within ±0.8% RO
Hysteresis	Within ±0.5% RO
Rated Output	1.25 mV/V or more

Environmental Characteristics

Safe Temperature	-20 to 70°C
Compensated Temperature	-10 to 60°C
Temperature Effect on Zero	Within ±0.05% RO/°C
Temperature Effect on Output	Within ±0.05%/°C

Electrical Characteristics

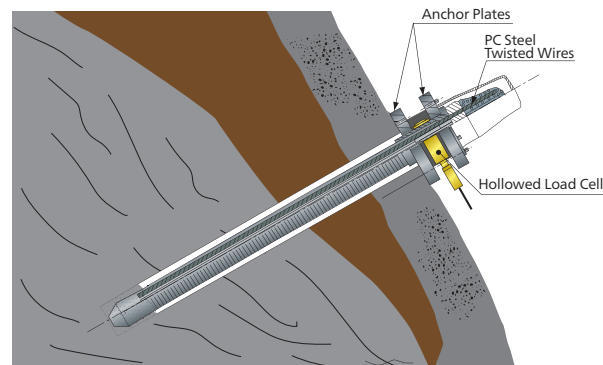
Safe Excitation	15 V AC or DC
Recommended Excitation	1 to 10 V AC or DC
Input Resistance	350 Ω ±0.3%
Output Resistance	350 Ω ±2%
Cable	4-conductor (0.5 mm ²) chloroprene shielded cable, 9.6 mm diameter by 1 m long, bared at the tip (Shield is not connected to the case.)

Mechanical Properties

Safe Overloads	150%
Degree of Protection	IP68 (IEC 60529)(Under 0.5 MPa water pressure, for 24 h at 23°C ±15°C)
Weight	See table below.

Application Sample

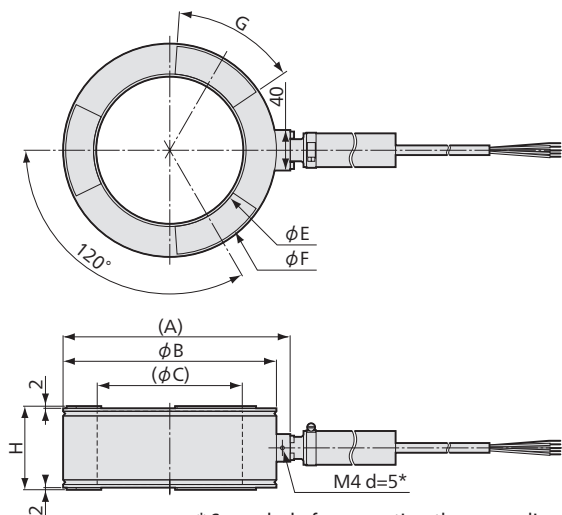
Tension Measurement of Earth Retaining or Retaining Wall



Models	Rated Capacity	(A)	φB	(φC)	H	φE	φF	G	Weight (Approx.)
BLW-A-500KN	500 kN	188	175	125	64	131	170	45°	4 kg
BLW-A-1MN	1 MN	223.5	210	144	82	150	205	52°	8 kg
BLW-A-1500KN	1500 kN	263.5	250	155	94	161	245	46°	14 kg
BLW-A-2MN	2 MN	263.5	250	155	94	161	245	60°	14.5 kg

Dimensions

φC: Hollow diameter



* Screw hole for mounting the grounding terminal of lightning arrester kit.

