

Hollowed Load Cell

● Load Measurement ● 1 MN, 2 MN



To endure field applications, these transducers feature a waterproof design, and high accurately

The BL-E series hollowed load cells are designed to accurately measure the load applied to an earth anchor, PC anchor and the support of a tunnel arch. To endure field applications, these transducers feature a waterproof design and high accurately.

Specifications

Performance

Rated Capacity	See table below.
Nonlinearity	Within $\pm 0.5\%$ RO for 1 MN Within $\pm 1.5\%$ RO for 2 MN
Hysteresis	Within $\pm 1\%$ RO
Rated Output	1 mV/V or more

Environmental Characteristics

Safe Temperature	-20 to 70°C
Compensated Temperature	-10 to 60°C
Temperature Effect on Zero	Within $\pm 0.1\%$ RO/°C
Temperature Effect on Output	Within $\pm 0.1\%$ /°C

Electrical Characteristics

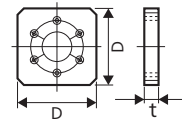
Safe Excitation	10 V AC or DC
Recommended Excitation	1 to 10 V AC or DC
Input Resistance	350 Ω $\pm 2\%$
Output Resistance	350 Ω $\pm 2\%$
Cable	4-conductor (0.5 mm ²) chloroprene shielded cable, 9.6 mm diameter by 1 m long, bared at the tip (Shield is not connected to the case.)

Mechanical Properties

Safe Overloads	120%
Weight	See table below.

Optional Accessories

Saddle BLP-(D)x(t)s for BL-Type Load Cells and (t) are available in the following range depending on rated capacity.
D = 100 x 100 mm to 400 x 400 mm
t = 20 to 50 mm

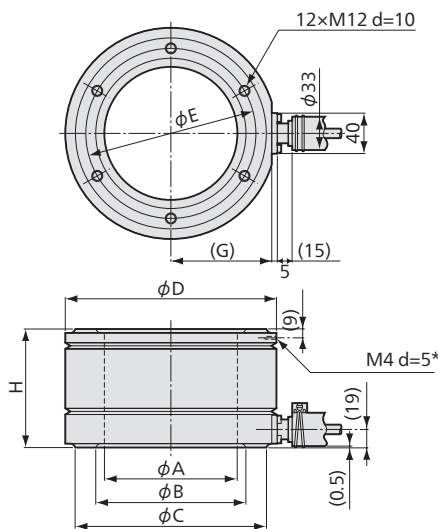


● Inform us of dimensions of the part of equipment which contacts with the saddle.
A round saddle is also available for option.

Models	Rated Capacity	ϕA	ϕB	ϕC	ϕD	ϕE	(G)	H	Weight (Approx.)
BL-100TE	1 MN	85	98	128	140	113	66	110	6.6 kg
BL-200TE	2 MN	133	150	190	210	170	101	120	14.1 kg

ϕA : Hollow diameter

Dimensions



* For grounding of lightning arrester kit.

Application Example

