

# BCD-E-70S

- Displacement Measurement
- 1.4 mm for tension & 0.35 mm for compression

## Concrete Surface Displacement Transducer



### For indoor testing of concrete loads

- A dedicated mounting fixture and adhesive facilitate mounting on concrete surfaces.
- Screw fixing makes it reusable.
- Easy installation for applications to other than concrete

The BCD-E-70S is a surface displacement transducer developed for indoor testing of concrete loads.

### Specifications

#### Performance

<b>Rated Capacity</b>	2% tensile strain or less (0 to 1.40 mm) 0.5% compressive strain or less (0 to 0.35 mm) (With a gage mark distance of 70 mm)
<b>Nonlinearity</b>	Within $\pm 3\%$ RO
<b>Hysteresis</b>	Within $\pm 3\%$ RO
<b>Rated Output</b>	Approx. 2.5 mV/V (Based on 0.5% compressive strain as the origin, and a rated tensile load (Displacement) is applied.)

#### Environmental Characteristics

<b>Safe Temperature</b>	-20 to 70°C
<b>Compensated Temperature</b>	-10 to 60°C
<b>Temperature Effect on Zero</b>	Within $\pm 0.1\%$ RO/°C
<b>Temperature Effect on Output</b>	Within $\pm 0.1\%$ /°C

#### Electrical Characteristics

<b>Safe Excitation</b>	10 V AC or DC
<b>Input Resistance</b>	120 $\Omega$ $\pm 10\%$
<b>Output Resistance</b>	120 $\Omega$ $\pm 10\%$
<b>Cable</b>	4-conductor (0.08 mm <sup>2</sup> ) ETFE shielded cable, 4 mm diameter by 3 m long, bared at the tip

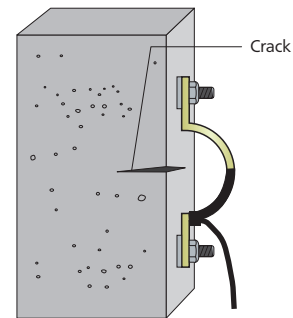
#### Mechanical Properties

<b>Safe Overloads</b>	110%
<b>Measuring Force</b>	Approx. 1.96 N (For 2.0% tensile strain)
<b>Weight</b>	Approx. 15 g

**Optional Accessories** Mounting fixture BCD-E-70SJ

### Application Example

Indoor testing of concrete loads.



### Dimensions

